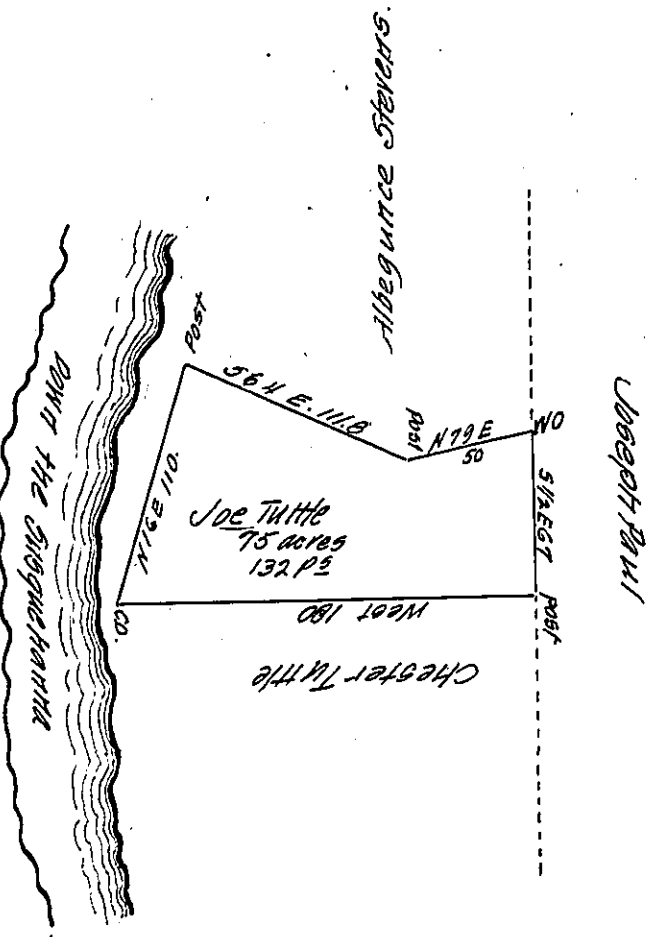


FORM NO. 1.



A Draft of a tract of land Situate in the County of Bradford adjoining Joseph Paul and others Surveyed first of June 1826 for Joel Tuttle in pursuance of a Warrant bearing date the Eighth day of May 1826. Containing Seventy five acres and one hundred and thirty two perches and the allowance of six Per Centage

To Genl. Hiester Esquire
Surveyor General

Elipt Mason D.S.

IN TESTIMONY that the above is a copy of the original remaining on file in the Department of Internal Affairs of Pennsylvania, made conformably to an Act of Assembly approved the 16th day of February 1833, I have hereunto set my hand and caused the Seal of said Department to be affixed at Harrisburg, this second day of May 1907

Henry Howard
Secretary of Internal Affairs.